

# CS 315-02 Lab Lab03 Sol Analysis Cache Memory

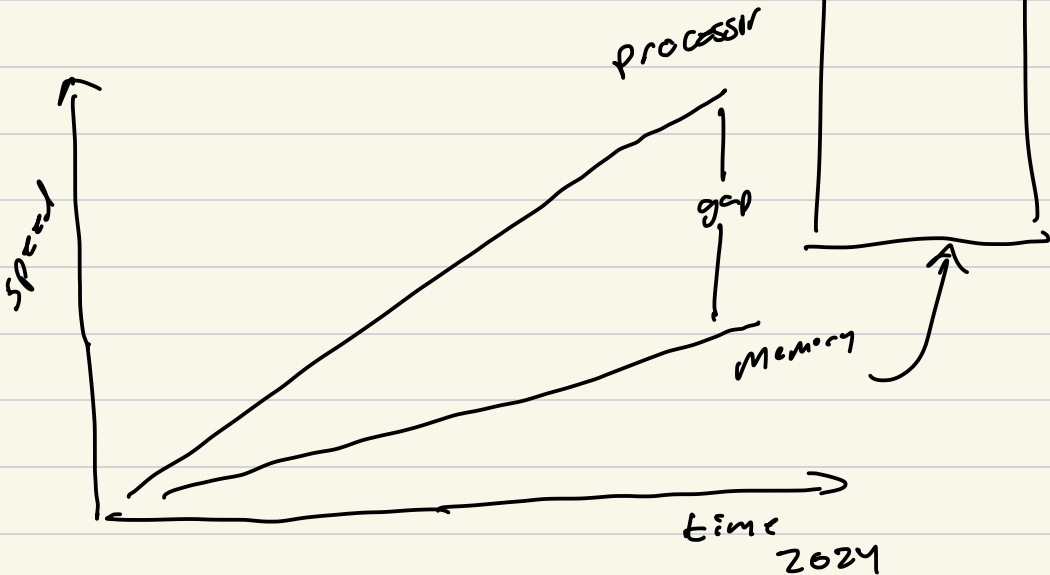
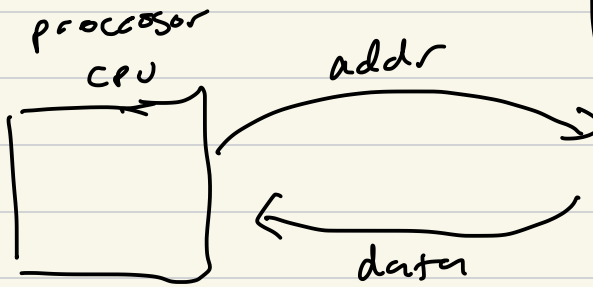
## Lab 03 Sol

### Dynamic Analysis

### Cache Memory

Main  
Memory

RAM (DRAM)

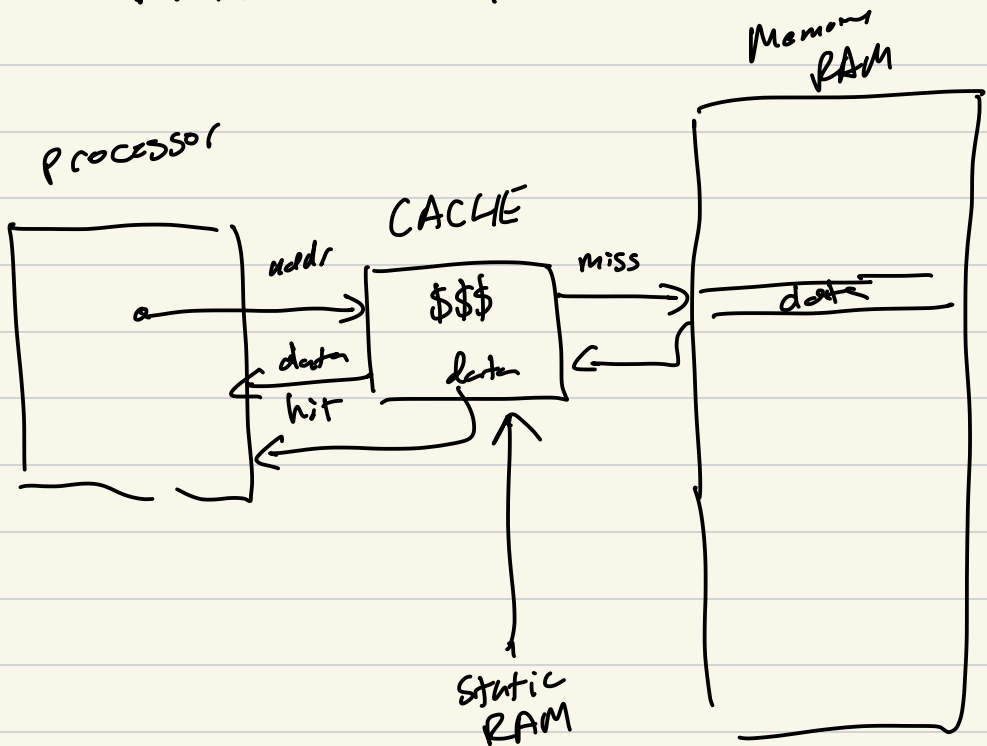


# Two types of RAM

RAM = Random Access Memory

SRAM = Static RAM

DRAM = Dynamic RAM



# Cache Questions

- 1) How to find addr in cache?
- 2) How to determine if the data we want is in the cache?
- 3) Which data do we remove from the cache if full?

## Principles of Locality

- 1) Spatial Locality
- 2) Temporal Locality

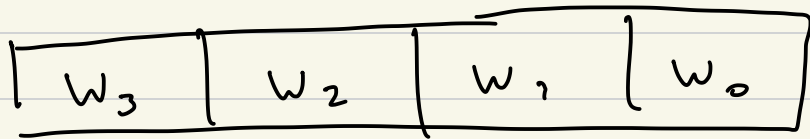
# Types of Caches

Direct Mapped

~~\*~~ Set Associative

Fully Associative

Cache Slot



Block  
size

